

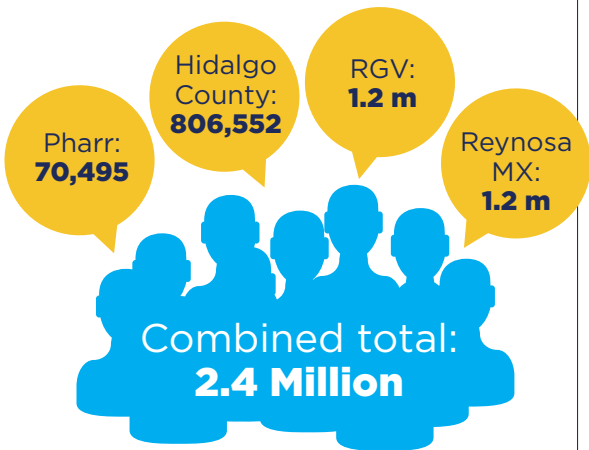


Located in the southernmost region of Hidalgo County, the City of Pharr encompasses 23.72 square miles of land within its city limits. It also contains the planning capacity for 27.86 square miles of land as part of the Extra Territorial Jurisdiction boundary, for a combined total of 51.5 square miles.

With a robust and rapidly growing population, the City of Pharr has the 13th fastest growing economy in the United States. Known as a hub for business growth and expansion, Pharr continues to exceed expectations by providing the essential tools and resources for both domestic and foreign development in all business ventures.

## POPULATION TRENDS

In recent years, Pharr has experienced strong economic growth and development with its population steadily increasing to over 77,000 residents.



## EDUCATION

### Public and Independent School Districts

Pharr has an outstanding educational infrastructure with 54 campuses and 5 independent school districts:

- Pharr San Juan Alamo ISD**
- Valley View ISD**
- Hidalgo ISD**
- IDEA Charter Schools**
- Vanguard Academy**

### Access to Higher Education

With more than 70,000 students, the Rio Grande Valley is emerging as a center for higher education in South Texas. Several institutions educate the area workforce, including:

- University of Texas Rio Grande Valley**
- South Texas College**
- University of Phoenix**
- Texas A&M School of Public Health**
- Texas A&M University – Kingsville**
- Texas A&M University – McAllen (COMING SOON)**
- Our Lady of the Lake – La Feria**



## LABOR MARKET

Pharr has a highly desirable demographic profile for businesses in a variety of industries. The median age is 29 years and 85% of the workforce is bilingual. This population of young, educated individuals allows businesses to evaluate and select the best possible candidates.

Total Civilian Workforce: **339,840**

Civilian Workforce Unemployment Rate: **7.6%**

Pharr Civilian Workforce Unemployment Rate: **6.3%**



## CONNECTIVITY & TRADE

Pharr is a key point of entry for trade, providing air, sea, and land access to international and domestic markets via:

- The Pharr International Bridge**
- Interstates 12 and 69**
- Valley International Airport**
- McAllen Miller International Airport**
- Brownsville International Airport**
- The Port of Brownsville**

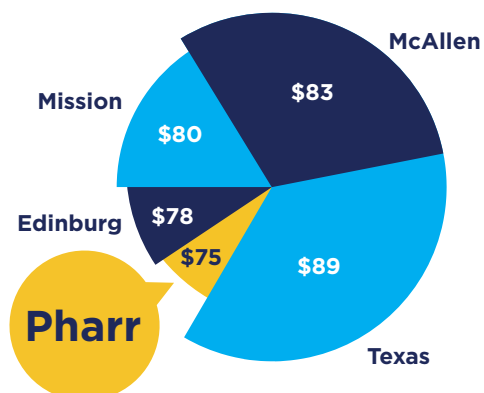


## HIDALGO AREA LARGEST EMPLOYERS

Residents in Pharr work in a variety of industries. Some of the area's largest employers include:

- HEB Foods
- University of Texas Rio Grande Valley
- Doctors Hospital at Renaissance
- Woodcrafters
- General Electric
- International Paper

## COST OF LIVING INDEX



## HOUSING UNIT SUMMARY

Living in Pharr, you get all the benefits of having a large city nearby without the high price tag. Compared to the rest of the country, Pharr's cost of living is 25.4% less than the national average. This allows residents in Pharr to enjoy a great lifestyle for less.

Housing Unit Summary	Total	Own	Rent	Vacant
<b>Current</b>	<b>\$22,889</b>	<b>60.5%</b>	<b>39.5%</b>	<b>12.7%</b>
<b>2010</b>	<b>\$21,952</b>	<b>64.4%</b>	<b>6,574%</b>	<b>15.9%</b>
<b>2013</b>	<b>\$23,094</b>	<b>61.3%</b>	<b>38.7%</b>	<b>13.9%</b>

## CITY INCOME SUMMARY

	2015	2010	2013
<b>Median Household Income</b>	<b>33,294</b>	<b>29,527</b>	<b>32,087</b>
<b>Per capita Income</b>	<b>12,789</b>	<b>11,860</b>	<b>12,964</b>
<b>Average Household Income</b>	<b>44,166</b>	<b>40,372</b>	<b>43,741</b>

## PROPERTY TAX STRUCTURE

Entity	Description	PSJA ISD	Hidalgo ISD	Valley View ISD
C	City Tax	0.654	0.654	0.654
DR1	Drainage District #1	0.0951	0.0951	0.0951
GHD	Hidalgo County	0.5900	0.5900	0.5900
JCC	South Texas College	0.1850	0.1850	0.1850
S	ISD	1.3992	1.5300	1.2770
SST	South Texas Schools	0.0492	0.0492	0.0492
<b>TOTAL TAX RATE</b>		<b>2.9725</b>	<b>3.1033</b>	<b>2.8503</b>